

Lutinus[®]

(progesterone) Vaginal Tablet 100mg



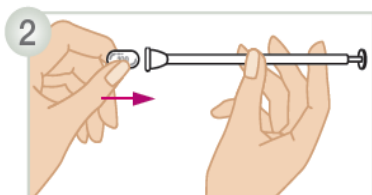
How to use LUTINUS

Always follow your doctor's instructions when using LUTINUS. Ask your doctor if you are unsure.

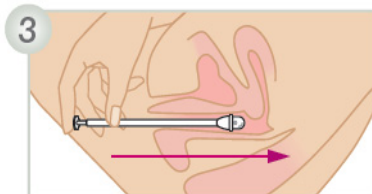
LUTINUS is placed directly into the vagina using the applicator provided.



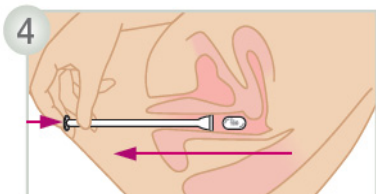
Remove the tablet from the packaging by pulling the small tab on the silver-coloured film. NOTE: It is *not* possible to push the tablet out.



Put one tablet into the space at the end of the applicator. Make sure that the tablet is firmly in place and does not fall out.



When you put the applicator with the tablet into your vagina, you can be standing up, sitting down or lying on your back with your knees bent. Carefully insert the narrow end of the applicator high up into your vagina.



Press the plunger to release the tablet. Remove the applicator, rinse it carefully in hot running water and keep it for future use.

NOTE: If you forget to use LUTINUS, take one dose as soon as you remember and then continue as normal. Do not take a double dose to compensate for the dose which you forgot.

You do not need to lie down after inserting the tablet. If you do not want to use the applicator, you can insert the tablet high up into your vagina using your fingers.